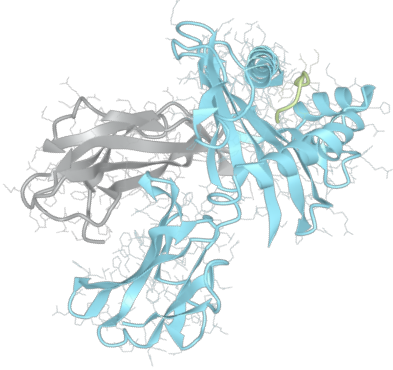


Product datasheet

sHLA-B*35:08

B*3508, B3508, B*35, B35, B35



Serological Name	B35
Peptide Load	Endogenous
Modification	Unmodified
Conjugation	Unconjugated
SKU	B3508

Product Description

Allele Name	B*35:08 B2m
HLA Class	HLA Class I
HLA Gene Locus	HLA-B
Alternative Allele Name A Chain	B*3508, B3508, B*35, B35, B35
Alternative Allele Name B Chain	-
Description	Recombinant, truncated Class I soluble Human Leukocyte Antigen (sHLA), naturally folded and glycosylated, loaded with endogenous peptides.
Serological Name	B35
Serological Split	-
Bw4/Bw6 Assignment	Bw6
Bw4/Bw6 Sequence	SLRNLRG
Allele Frequency [World Population]	
A chain	1.6%
B chain	-

Associated products

[B3508bio](#)
[B3508pe](#)

Product Specification

Product name	HLA-B*35:08
HLA Species	Human
Host Cell Line Species	Human
Clone Designation	B3F5
Tail Specification	VLDL
Peptide Load	Endogenous
Modification	Unmodified
Conjugation	Unconjugated
Complexity	Monomer
Protein Format	Recombinant, truncated, soluble, non-modified, non-labeled, endogenously loaded
Storage Temperature	4 °C (This product should be stored undiluted)
Form	Liquid
Concentration	1000.0 µg/ml
Formulation	PBS/0.02% Sodium Azide
pH	7.4
Purification Method	Affinity Chromatography
Grade	Research Use Only [RUO]
Authentication Verification	Sequence Based Typing

Protein Sequences

Alpha Chain Sequence	GSHSMRYFYT AMSRPGRGEP RFIAVGYVDD TQFVRFSDSA ASPRTEPRAP WIEQEGPEYW DRNTQIFKTN TQTYRESLRN LRGYYNQSEA GSHIIQRMYG CDLGPDGRLR RGHDQSAYDG KDYIALNEDL SSWTAADTAA QITQRKWEAA RVAEQRRAYL EGLCWEVLR R YLENGKETLQ RADPPKTHVT HHPVSDHEAT LRCWALGFYP AEITLTWQRD GEDQTQDTEL VETRPAGDRT FQKWAAVVVP SGEEQRYTCH VQHEGLPKPL TLRVSVSTDD DLA
Beta Chain Sequence	IQRTPKIQVY SRHPAENGKS NFLNCYVSGF HPSDIEVDLL KNGERIEKVE HSDLSFSKDW SFYLLYYTEF TPTEKDEYAC RVNHVTL SQP KIVKWDRDM

Related Products

[B3501](#)
[B3505](#)
[A0201](#)
[B0702](#)

Applications

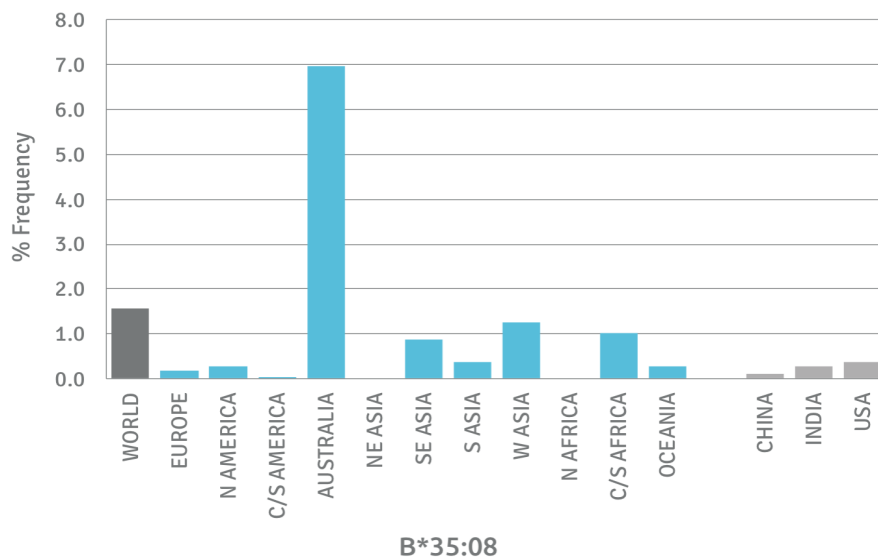
HLA Sandwich ELISAs
HLA Direct ELISAs
HLA-Sera Antibody Assays
HLA Controls in ELISA Assays
HLA Assay Standards
HLA Blocking Assays
HLA Neutralizing Assays
HLA Competition Assays
HLA Bead Assays
HLA Immunization Procedures

Recommended Antibodies

W6/32
Anti-B2m

Allele Frequency

Worldwide Allele Frequency



Please note:

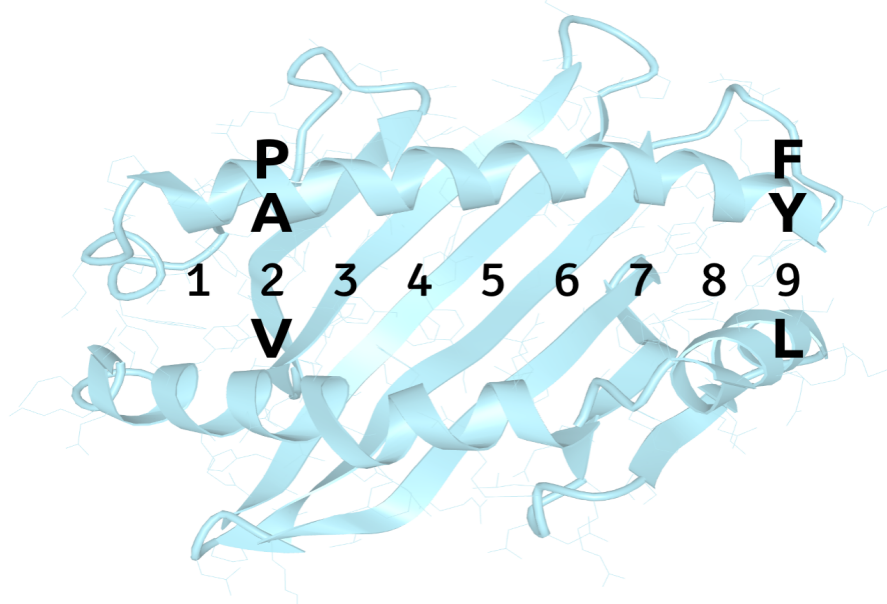
ALL PRODUCTS ARE FOR RESEARCH USE ONLY. NOT FOR COMMERCIAL USE IN DIAGNOSTIC PROCEDURES.
For more information, please visit our Policies section on our website. For licensing inquiries, please contact

licensing@hlaprotein.com

 HLA Protein
PURE PROTEIN, LLC

Motif

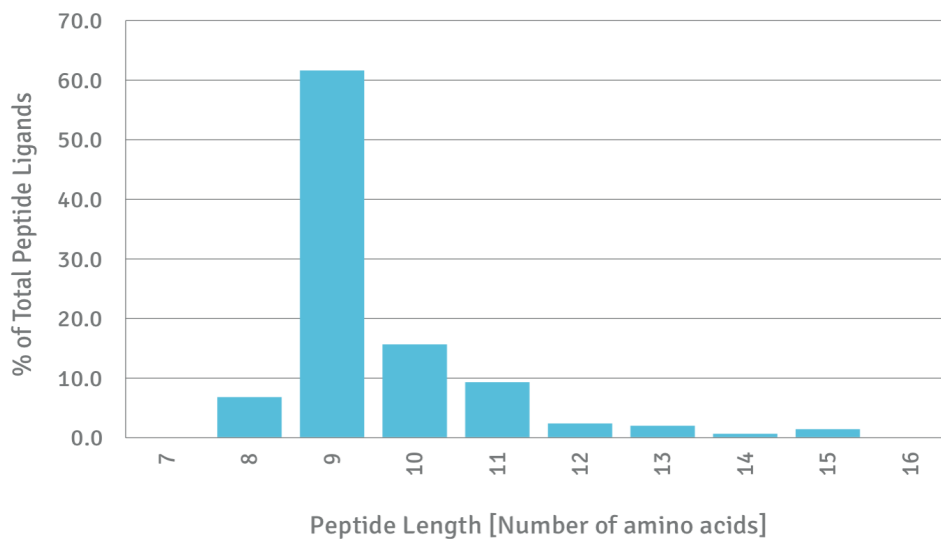
B*35:08 BINDING MOTIF



Length Distribution

HLA Length Distribution

B*35:08



Please note:

ALL PRODUCTS ARE FOR RESEARCH USE ONLY. NOT FOR COMMERCIAL USE IN DIAGNOSTIC PROCEDURES.

For more information, please visit our Policies section on our website. For licensing inquiries, please contact

licensing@hlaprotein.com

Eplet Assignments

B*35:08

Eplet	Polymorphic Residues	Antibody Reactivity
9Y	9Y	
12M	12M	
44RT	44R45T	Yes
62RN	62R63N	
63NI	63N66I	
66I	66I	
66IF	66I67F	
69TNT	69T70N71T	Yes
71TTS	71T73T77S	Yes
74Y	74Y	
76ES	76E77S	
76ESN	76E77S80N	Yes
77S	77S	
77SRN	77S79R80N	
80N	80N	Yes
94I	94I	
95I	95I	
97R	97R	
99Y	99Y	
103L	103L	
113H	113H	
113HD	113H114D	
116S	116S	
131S	131S	Yes
151ARV	150A151R152V	
152V	152V	
156R	156R	
156RA	156R158A	
163L	163L	
163LE	163L166E	
163LW	163L167W	Yes
193PV	193P194V	Yes
194V	194V	